

From: **Spectral Matching in Time Domain: A Seismological and Engineering Analysis**

Bulletin of the Seismological Society of America. 2018;108(4):1972-1994. doi:10.1785/0120170396

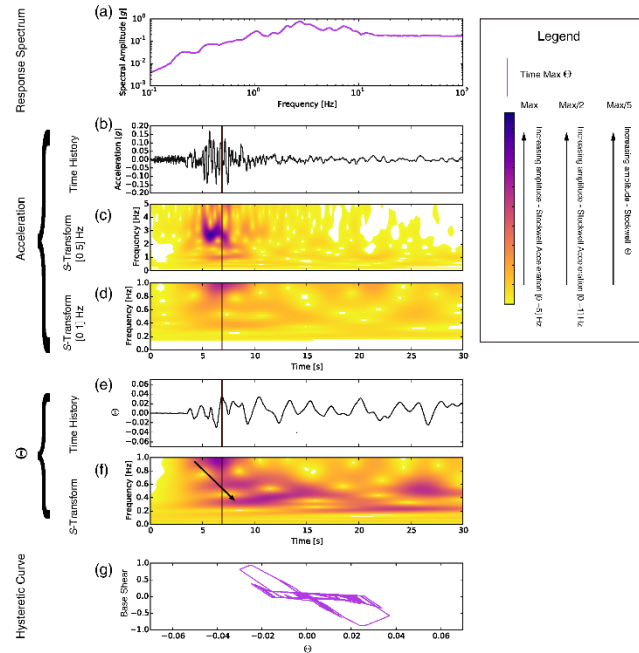


Figure Legend:

Overview of the features of one of the 226 real target waveforms and the corresponding spring response. (a) Response spectrum, (b) accelerogram, (c) accelerogram S-transform zoomed between 1 and 5 Hz, (d) accelerogram S-transform zoomed between 0 and 1 Hz; (e) drift time history, (f) drift S-transform, and (g) spring cyclic behavior. The solid vertical line indicates the occurrence time of the maximum lateral drift. Details on the S-transform scales are given in the legend. The color version of this figure is available only in the electronic edition.