

From: **Spectral Matching in Time Domain: A Seismological and Engineering Analysis**

Bulletin of the Seismological Society of America. 2018;108(4):1972-1994. doi:10.1785/0120170396

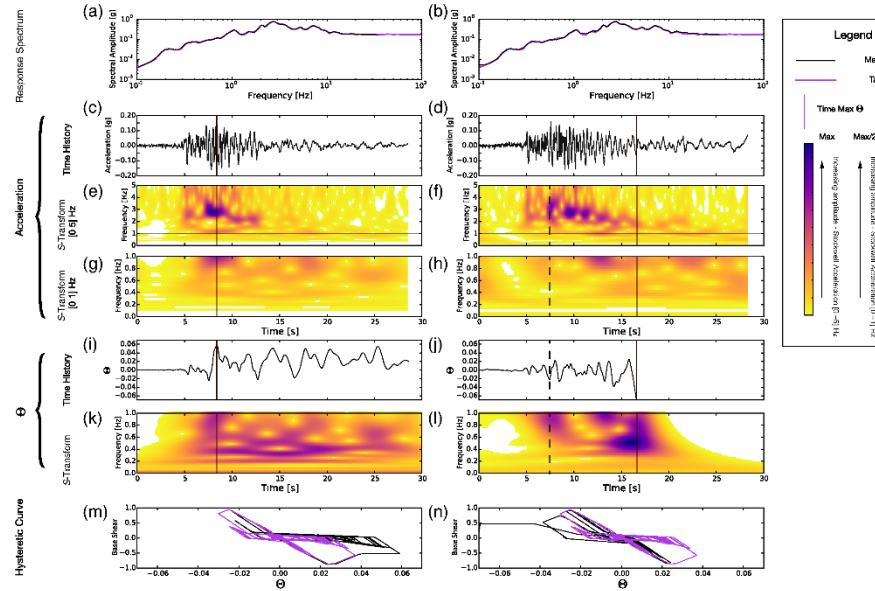


Figure Legend:

Comparison between two accelerograms matched with the target spectrum of the accelerogram shown in Figure 8 and the corresponding spring responses. Each column has the same structure utilized in Figure 8; details on graphic features are reported in the legend. The instant at which the spring reaches a drift higher than 2.5% is plotted as a dashed line in (f), (h), and (l). The color version of this figure is available only in the electronic edition.