



HAL
open science

Study of the long-term behaviour of ^{137}Cs atmospheric fallouts in french forests

Dina Okhrimchuk, Pierre Hurtevent, Marc Andre Gonze, Anne Probst, Marie Simon Cornu

► To cite this version:

Dina Okhrimchuk, Pierre Hurtevent, Marc Andre Gonze, Anne Probst, Marie Simon Cornu. Study of the long-term behaviour of ^{137}Cs atmospheric fallouts in french forests. 28ème Congrès des Doctorants en Sciences de l'Environnement, Apr 2021, Marseille (on line), France. irsn-04065096

HAL Id: irsn-04065096

<https://irsn.hal.science/irsn-04065096v1>

Submitted on 11 Apr 2023

HAL is a multi-disciplinary open access archive for the deposit and dissemination of scientific research documents, whether they are published or not. The documents may come from teaching and research institutions in France or abroad, or from public or private research centers.

L'archive ouverte pluridisciplinaire **HAL**, est destinée au dépôt et à la diffusion de documents scientifiques de niveau recherche, publiés ou non, émanant des établissements d'enseignement et de recherche français ou étrangers, des laboratoires publics ou privés.



Distributed under a Creative Commons Attribution - NonCommercial - NoDerivatives 4.0 International License

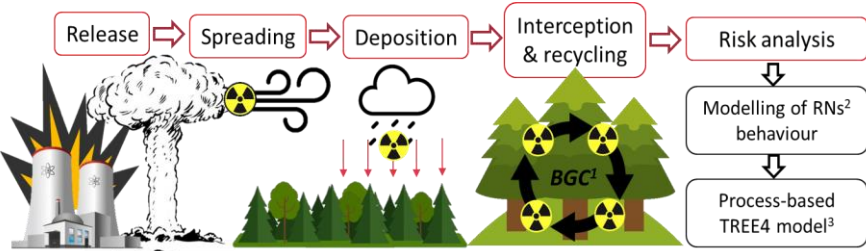
Study of the long-term behaviour of ^{137}Cs atmospheric fallouts in French forests

D. Okhrimchuk^{1*}, P. Hurtevent¹, M.-A. Gonze¹, A. Probst², M. Simon Cornu¹

¹Institut de radioprotection et de sûreté nucléaire (IRSN), Centre de Cadarache,
13115 Saint Paul lez Durance, France

²EcoLab, Université de Toulouse, CNRS, 31400 Toulouse, France

Context & Issues



1st issue

Is the TREE4 model valid for long-term dynamics of ¹³⁷Cs in French forests?

2nd issue

How to estimate long-term biogeochemical processes such as root uptake, immobilization in wood, fixation in soil?

3rd issue

To what extent are stable chemical analogues (K & ¹³³Cs) a good substitute for assessing ¹³⁷Cs biological transfer processes?

(1) BGC – Biogeochemical cycle; (2) RN – Radionuclide; (3) TREE4 model - Transfer of Radionuclides and External Exposure in FOrest Systems.

Objectives

I) Better understand & quantify the long-term behaviour of ¹³⁷Cs in forests

II) Test & improve TREE4 model (Fig.1) for French forests

Materials & Methods

1) Literature review on the biogeochemical cycle (BGC) of K in forests

2) Analysis of RENECOFOR monitoring network data collected since 1992 (102 permanent forest sites all over France)

3) Data acquisition from field sampling campaigns (4 sites: 2 deciduous & 2 coniferous, flux measurement for BGC fluxes calculation)

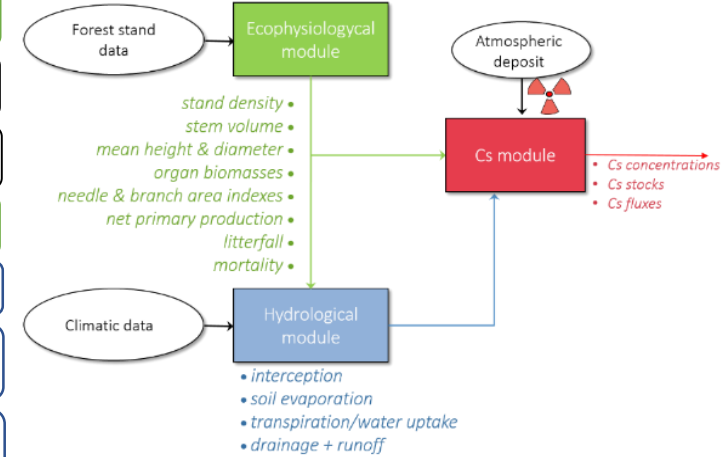


Fig.1: TREE4 model structure

Results

Literature review on the BCG of K

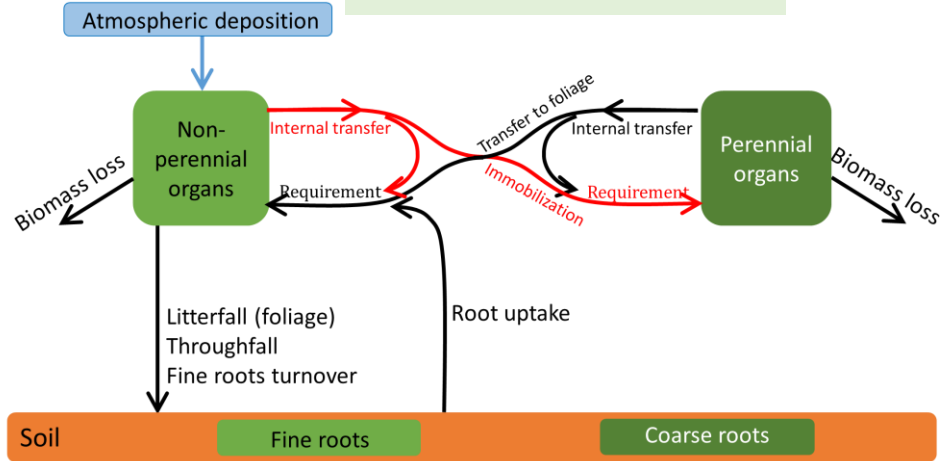


Fig.2: Simplified scheme of the biological sub-cycle

Forest stand dynamics (HET64)

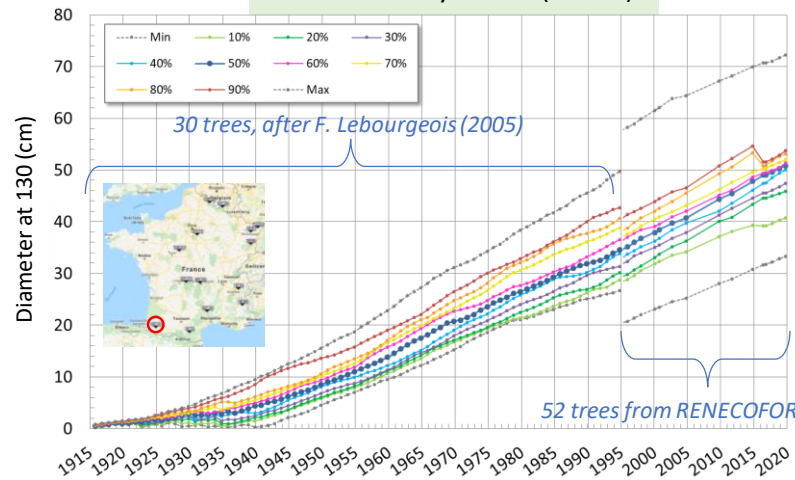
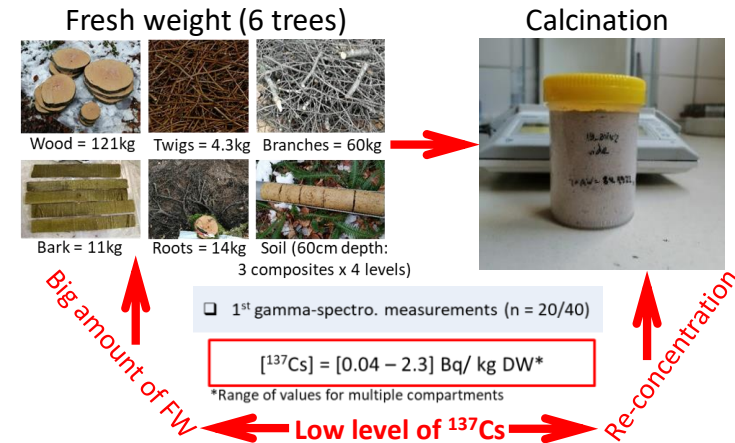


Fig.3: Time evolution of tree diameter growth

Forest compartments sampling & laboratory analysis



Upcoming research actions

2021 > • Samples treatment, gamma-spectrometry & chemical analysis; • Calculations on the BGC fluxes; • Biomass growth dynamic estimations through allometric equations; • Publication; • Two sampling campaigns to Scots pine & Silver fir forests. **2022** > • TREE4 model parameterization.